

Figure 7.

**Step 2:** Twist the filter housing clockwise and detach the housing from the bracket.

**Step 3:** Hold the housing, use the included housing cap wrench, turn counterclockwise and remove the housing cap.

**Step 4:** Take out the old filter, then put a new one in. Flush the newly installed filter for at least 5 - 10 minutes before drinking the water. The replacement process is now completed.

Questions? Concerns? Contact us at [123filter.com/support](http://123filter.com/support) or send us an email to [support@123filter.com](mailto:support@123filter.com).

## Warranty Registration

To register your product for the warranty, visit our website at [123filter.com](http://123filter.com) and go to the "Warranty" tab.

We provide a 30-day money-back guarantee, a 1-year manufacturer warranty, and lifetime tech support for all of our products. However, we do not have order information from websites other than 123Filter.com (Amazon, Home Depot, etc.), so please fill in that information upon registering your system. If you have any questions or concerns about your product, please call or email us, or put it in the notes/comments upon registering your warranty. Your satisfaction is our business!

If you are happy with our products and service, please show your support by writing a product review on Amazon, even just a single line. It takes you just a minute but it means a lot to us. Thank you!

[www.123Filter.com/warranty](http://www.123Filter.com/warranty)  
678-261-7611  
M-F 9-5 EST  
Atlanta, GA USA  
[support@123filter.com](mailto:support@123filter.com)

**Water's Good™**

**iSpring** Water Systems

# iSpring US15 Series Installation Guide

Ver. 08/2021

## Packing List and Components

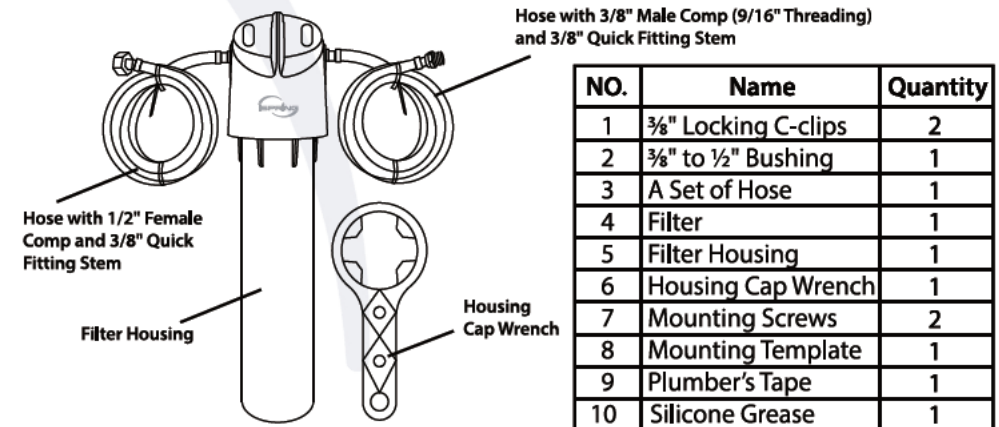


Figure 1.

Please **READ CAREFULLY** before installation.

## Precautions

1. Do not use this system with water that is microbiologically unsafe or potentially inadequate disinfection.
  2. Performance data was tested under standard laboratory conditions; actual performance may vary.
  3. This system is designed to be used on a cold supply only and kept away from freezing environments.
  4. The installation must comply with all applicable local plumbing codes and/or regulations.
- ⚠ Choking hazard. Small parts are included in the package. Please keep the package out of the reach of small children at ALL times.

If you have any questions or concerns during the installation, please contact us at [support@123filter.com](mailto:support@123filter.com) or visit our help page at [123filter.com/support](http://123filter.com/support)



## Installation

This system works with under sink cold water supply that has 3/8" NPT or 1/2" NPT connections.

Tools required:

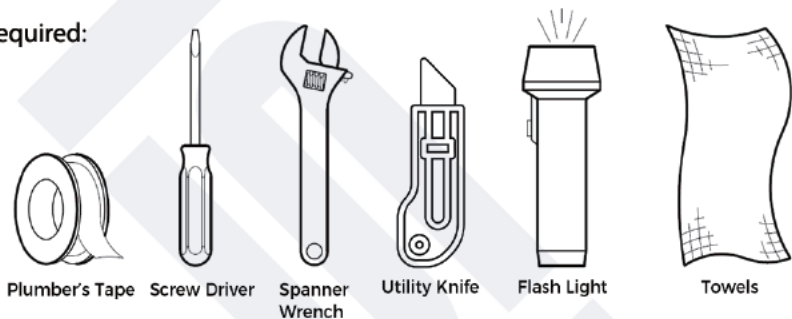


Figure 2.

**Step 1:** Turn off the cold water supply and remove the existing cold water supply line from the angle valve.

**Step 2:** (Optional) Mounting the system is NOT required. The system does NOT need to be mounted to work properly. Please note if the system is to be mounted, it is recommended to mount the filter at least 4 inches lower than the water sink for easier installation and 2 inches higher than the bottom of the cabinet for easier filter replacement. Mount the filter with the included drilling template as shown below:

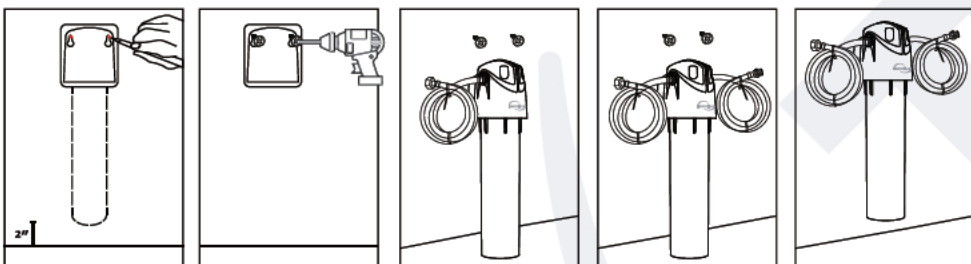
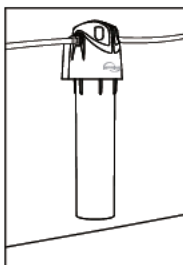


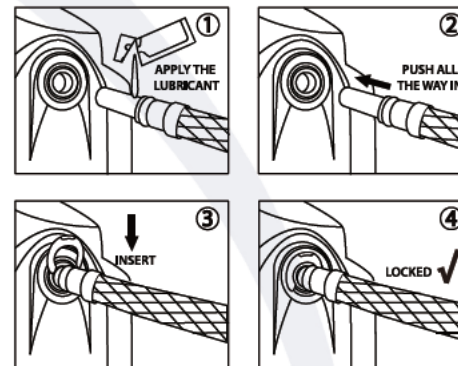
Figure 3.



**Step 3:** Take out the hoses from the package. US15 Series come with a cap with  $\frac{3}{8}$ " quick fitting on each side. Please refer to Figure 4. on how to connect & disconnect quick fittings. Install the inlet hose with a  $\frac{1}{2}$ " female thread to the fitting on the left side of the system (marked with "In"), then install the outlet hose to the right side (marked with "Out"). The Inlet hose should be connected to the angle valve, while the outlet hose goes to the cold water line previously removed from the angle valve.

**If the system is to be installed on a  $\frac{3}{8}$ " water inlet, install the bushing on the angle valve to convert the fitting from  $\frac{3}{8}$ " to  $\frac{1}{2}$ ". If this is to be installed on a  $\frac{1}{2}$ " water inlet, install the bushing to the  $\frac{3}{8}$ " male fitting on the outlet hose. To ensure a leak-free installation, use the plumber's tape between threaded fittings (included in the package).**

**HOW TO CONNECT**



**HOW TO DISCONNECT**

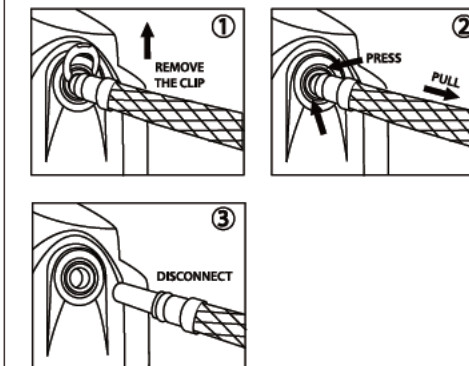


Figure 4.

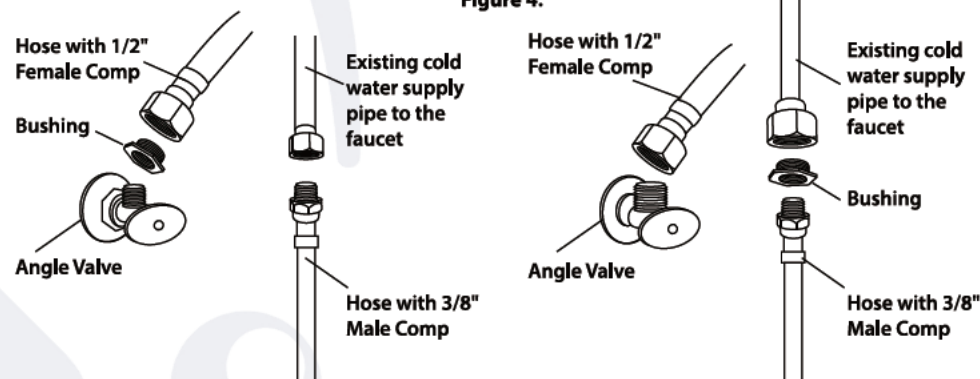


Figure 5.

**Step 4:** The completed installation should be:

Turn the water supply back on. If a leak is detected, turn off the water supply and re-apply plumber's tape until the leak stops. Turn on the faucet, let the water run through and flush the system for at least 5 - 10 minutes. It is normal to observe some loose activated carbon sediments and cloudy water during the initial flush process.

The installation is now completed.

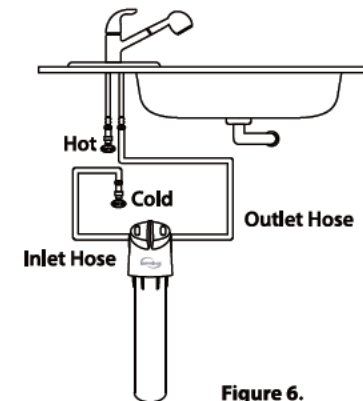


Figure 6.

**Filter Replacement**

**Step 1:** Turn off the water supply, leave the faucet on and drain any excess water in the system and water line.