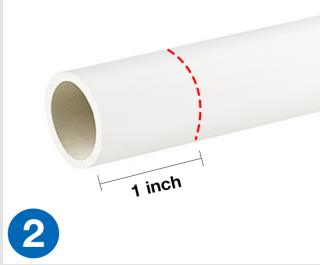


HOW TO CONNECT



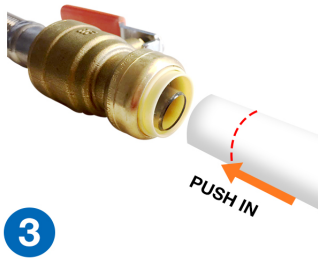
Step 1:
Make a clean and square cut
with a pipe cutter.

HOW TO CONNECT



Step 2:
Mark the pipe with 1 inch
insertion depth.

HOW TO CONNECT



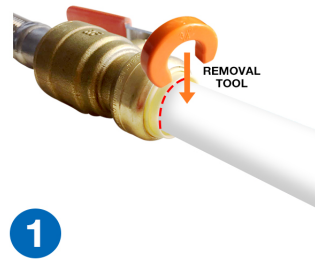
Step 3:
Insert the pipe into the fitting.

HOW TO CONNECT



Step 4:
Check the insertion depth
mark.

HOW TO DISCONNECT



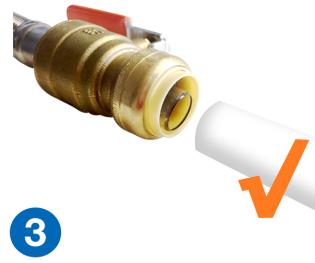
Step 1:
Snap the removal tool over
the pipe and align next to the
fitting.

HOW TO DISCONNECT



Step 2:
Firmly push the removal tool
over the collar of the fitting.

HOW TO DISCONNECT



Step 3:
Pull the pipe out of the fitting.



123filter.com

support@123filter.com

(678) 261-7611

Monday - Friday 8:30 AM - 5:30 PM EST