



# Reverse Osmosis Water Filtration System

## Filter Cartridge Replacement Schedule



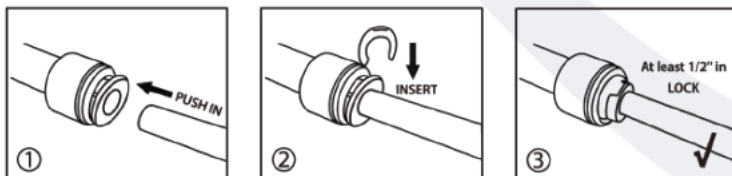
<b>STAGE 1</b> Sediment #FP15 3-12 months	<b>STAGE 2</b> GAC #FG15 6-12 months	<b>STAGE 3</b> CTO #FC15 6-12 months	<b>STAGE 4</b> RO Membrane MC1/MC5/MC7 1-3 years	<b>STAGE 5</b> Post Carbon #FT15 12 months	<b>STAGE 6</b> Alkaline #FA15 6-12 months	<b>STAGE 6</b> Deionization #FD15 6-12 months	<b>STAGE 6 or 7</b> UV Lamp #UVB11 12 months
--	---	---	---	---	--	--	---

### Important Notice:

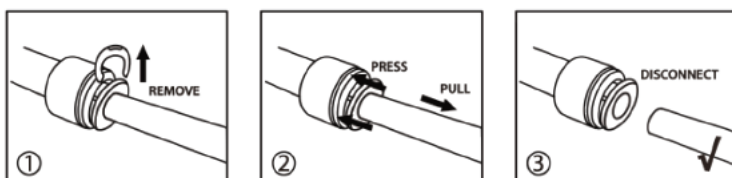
- Before starting the filter replacement, shut off both the cold water supply and tank valves. Open the RO faucet to depressurize the system. Place a bucket or towel under the system to catch any water spills.
- Ensure the O-rings are properly seated on the filter/membrane housings, cartridges and caps. We recommend replacing the O-rings every three years to prevent leaking due to potential damage.
- Use hot water and scent-free dish soap (optional) to clean the filter housing if needed. Rinse thoroughly.
- Flush the system for at least 15 minutes after filter replacement.

### Quick Connect Instruction:

#### HOW TO CONNECT



#### HOW TO DISCONNECT



Please check out our YouTube channel for more installation videos and tips.

@ispringwater

iSpring Water Systems

iSpring Water Systems





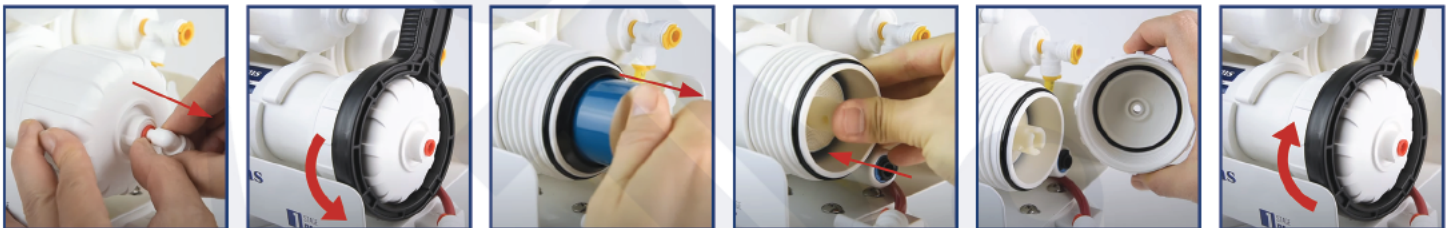
# Filter Cartridge Replacement Guide

## How to Change the 1st-3rd Stage Pre-filters:

1. Twist the housings clockwise from the system using the filter housing wrench. Be careful with the tubing connections when removing the system.
2. Remove and dispose of all expired filters. Unwrap and install the new filters. Ensure the O-rings are properly seated. Tighten filter housings back on with the housing wrench. Do not over-tighten.
3. Disconnect the pre-filter water outlet tubing. Turn on the feed water adapter and cold water supply valve. Flush the first three stages into a bucket.
4. Wait until the water is clear, shut off the feed water adapter valve, and reconnect the tubing to the pre-filter water outlet.

## How to Change the Reverse Osmosis Membrane:

1. Remove the tubing from the quick-connect fitting on the membrane housing cap.
2. Use the wrench to twist off the housing cap in a counter-clockwise direction.
3. Pull out the expired membrane. Use a screwdriver or pliers to apply leverage if necessary.
4. Unwrap and insert the new RO membrane into the housing without touching the membrane with your bare hands to avoid contamination. Ensure the membrane is seated flush with the housing.
5. Ensure O-rings are properly seated on the membrane housing and cap.
6. Place the membrane housing cap back on and hand tighten it, then use the housing wrench to tighten it another 1/4 - 1/2 of a turn. Do not over tighten. Reconnect the fitting back to the cap.



## How to Change Inline Cartridges in 5th-7th Stages:

1. Please note that the 5th - 7th stages (model specific) have certain directions, and each end may have different kinds of fittings.
2. For cartridges with quick-connect fittings, see instructions for reference.
3. Unwrap the new cartridge, follow the arrow sign on the cartridge label to install it onto the brackets, and reconnect the system.

## How to Change the UVB11 UV Light Bulb:

1. Carefully detach the black rubber cap attached to the ballast on the open end nut. Pull the UV light bulb and the green/blue wires out from the reactor chamber.
2. Carefully disconnect the power sockets of the green/blue wires on both ends of the UV light bulb, and plug them on the new UV light bulb.
3. Carefully insert the UV light bulb back into the quartz sleeve and attach the black rubber cap to the end.

