

iSpring ASKRCC Water Purifier Slide-out Mounting Kit Installation Manual

Ver. 08/2024



Like our products?
Please show your support by writing a product review on the marketplace where you make your purchase. Even just a quick statement means a lot to us.

Thank you!

iSpringFilter.com



Scan to get your FREE warranty

For questions, comments, or technical support, please contact us at:

✉ support@ispringfilter.com

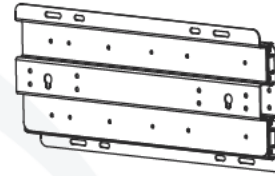
☎ +1 (678) 261-7611

💬 +1 (470) 560-0012

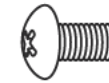
Monday-Friday 9:00 a.m. - 5:00 p.m. EST

Water's Good®

List of Accessories



Slide-out Rail



M6 Screw



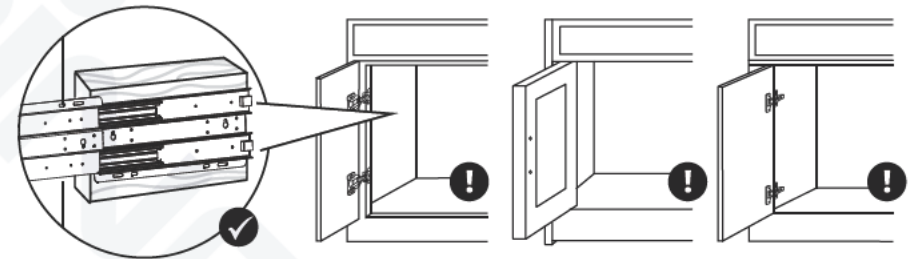
M6 Jam Nut



Self-tapping Screw

Important Note

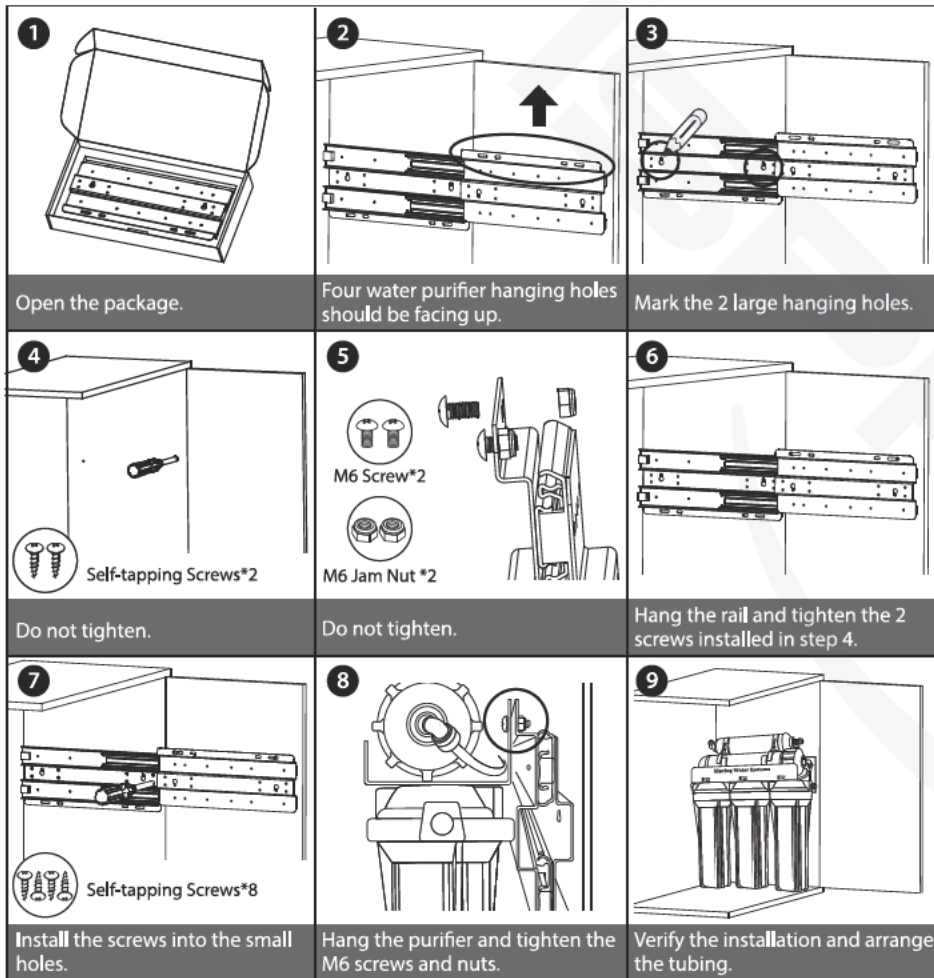
- Before installation, ensure that the inside surface of the cabinet is flat and free from obstacles. The cabinet bracket of the rail is 1/2" thick, and the water purifier bracket should be able to move smoothly without obstruction. If there is a gap between the inside surface of the cabinet and the open cabinet door, consider mounting an additional wood plank to bridge this distance and provide a stable surface for the kit installation.



- Please leave ample clearance at the bottom for convenient filter replacement in the future.
- When replacing the filter cartridge, support the water purifier with your hand. Do not let the slide-out rail bear all the weight.
- This product is an accessory for more effortless operation and filter change for the water purifier; please do not use it for other purposes.
- Do not put your fingers inside the slide-out rail to avoid pinching your fingers.

Operating Conditions	
Temperature	32 – 113°F
Humidity	20% - 98%

Installation



! Note: Additional screws and jam nuts are included in the package.

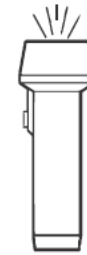
Tools Needed:



Screw Driver



Spanner Wrench



Flash Light



Towels



Plier

- 1 Open the package and carefully take out the rail and the screw pack in the box.
 - 2 Determine where you want to install the rail. This rail can be mounted on the left or right side of the cabinet. Make sure the side with four water purifier hanging holes is facing up. The slide-out rail should slide towards the door but not inwards to the cabinet.
 - 3 On the cabinet, use a pen or other tool to mark the location of the 2 large hanging holes in the rail's center.
 - 4 Install the self-tapping screws at the 2 marks. Be sure not to tighten the screws at this step and leave about 1/8" space between the screw head and the board for hanging the rail.
 - 5 Find 2 water purifier hanging holes on the slide-out rail that match the hanging holes on the water purifier. Then, use a plier or a wrench to place two M6 screws and two M6 jam nuts on the rail.
- !** Note: Be sure not to tighten the screws and nuts and leave about 5/32" space between them. The nuts should be facing outside.
- 6 Hang the rail on the 2 screws installed in the cabinet. Check if it slides out correctly. Then tighten the screws.
 - 7 Keep the rail pulled out and hold it to where it is level. Tighten the 2 screws and install the other 4 self-tapping screws into the small holes next to the large hanging holes.
 - 8 Hook the water purifier's hanging holes onto the two M6 screws and tighten the two M6 screw and jam nut sets.
 - 9 After tightening all screws, slide the purifier and arrange the tubing.